

# Year 3

## Summer 1

### Our Curriculum



This term our learning is themed around Southampton.


**Key Skills :**  
 Handwriting: Accurately and confidently joining with increasing with legibility and consistency.  
 Grammar: verb tenses, correct use of 'a' and 'an'  
 Punctuation: Inverted commas to punctuate direct speech consistency in ? ! , . A  
 No Nonsense spelling – suffix – ly, homophones, ou sound, different spelling strategies


**Spoken Language**  
 How do you use your voice to engage different listeners?  
 Can you ask questions to form your own ideas and opinions?




**RE**  
 Sacred Places

**PSHE**  
 Learning how to solve a problem

 **French**  
 Family/Pets/Homes  
 The alphabet/spelling

  
**Art**  
**Printing**  
 Learning the techniques of printing onto press print in a neat style. Using Andy Warhol and Southampton landmarks as inspiration for own print.


**Mathematics**  
 Number: Number and Place value  
 Addition, subtraction, multiplication and division.  
 Measurement: mass and time  
 Fractions



**Year 3**



**English**  
 Narrative writing about the Iron Man  
 Non chronological report about Southampton




**Geography**  
 I can locate Southampton using a range of maps. Can you compare Southampton to another city you have visited?  
 How are the places similar?  
 How are they different?  
 How does a local business impact upon Southampton?



**Science**  
 Plants  
 Sunflower competition-who can grow the tallest sunflower?  
 Exploring growing conditions. Investigating amount of water, soil, light, fertiliser.



**Music**  
 Recorders – In2 Music

**Computing**  
 Databases  
 What is a data?  
 What is a database?  
 Each class will be creating a class database.



**PE and games**  
 Athletics  
 Rhythmic Gymnastics

# How can you help your child at home?



Below are some suggested activities you may like to try with your child.

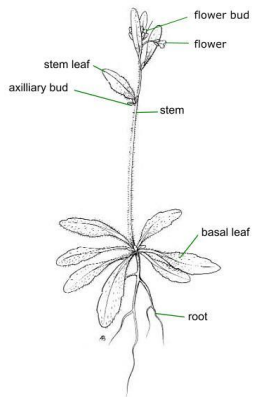


## How to be a Scientist.

What is a plant's life cycle?

Can you label the different parts  
of a plant?

Can you explain the purpose/job of  
the different plant parts?



## How to be a Geographer.

Can you locate Southampton on a range of  
maps?

Can you describe Southampton using  
geographical information?

How has human activity affected the land  
use of an area?



## Ways to support your child:

Make sure your child attends school daily and punctually.

Read together daily.

Practise times tables and spellings.

Support your child to complete their homework.

Talk to your child about what they have been learning about in school.